

# Lukpe La

## Trek to Snow Lake and crossing in the Shimshal Valley

2  
0  
1  
9

- An adventurous trek along the Biafo Glacier to Snow Lake
- Crossing the amazing Lukpe la and into the Shimshal Valley
- Optional Climb the remote Munglik Shar peak (6050m)
- Visit the beautiful and hospital Hunza Valley



# Crossing the Lukpe La

*Trek up the Biafo Glacier to Snow Lake, cross the Lukpe La pass to Shimshal Valley with an optional climb of Munglar Sar Peak (6050m) and onto the beautiful Hunza Valley.*

## **Tour Description**

28 day fully supported mountaineering trek with an optional climbing of a 6000m Peak in Shimshal.

This unique and special trek in a very remote part of Gilgit Baltistan Pakistan. We aim to trek a pioneering route away from the more popular trekking route. After we reach Snow Lake we will head north to the more remote Lukpe La pass to cross into Shimshal rather than take the more popular Hispar la route to Hunza.

Once in Shimshal we will attempt the 6050m Munglar Sar Peak and then continue onto Hunza and experience the beauty and amazing hospitality of the colourful region. We will then continue onto Islamabad where the tour ends.

## **TOUR HIGHLIGHTS**

- Remote wild expedition.
- Crossing the remote and rarely crossed Lukpe La
- Trek remote Shimshal and optional Climb Munglar Sar Peak 6050m
- Explore the beautiful upper Shimshal valleys
- Experience the hospitality of Hunza and Northern Pakistan

## **Grading**

- Altitude range 3100-6050m
- Day temperature range 5C to 15C
- Night temperature range -15C to 5C

## **Detailed Plan**

### **Day 0 - Travel from Home Country**

#### **Day 1: Welcome to Islamabad Airport, Transfer to Hotel**

Arrive to Islamabad airport and transfer to Hotel. Relax, Recover. Group meeting and briefing. (Hotel)

#### **Day 2: Fly to Skardu or Drive to Chilas**

Early amazing flight to Skardu, in case of flight cancellation, Drive to Chilas

#### **Day 3: Skardu Sightseeing or Drive to Skardu**

Sightseeing of Skardu town or Drive to Skardu

#### **Day 4: Skardu Sightseeing and Team Briefing**

Briefing and sightseeing of Skardu town

#### **Day 5: Drive to Askole 7 Hours Drive 3100m**

Today we will take the spectacular drive to Askole. We leave Skardu for the 7 hour drive to the road head at the village of Askole, passing through the Shigar Valley. Then through the amazing Braldu Gorge before arriving at the road head at town of Askole. Askole is the famous start for K2 treks and Expeditions. Camp (B/L/D)

#### **Day 6: Trek to Namla 4-5 Hours 3400m**

We will spend the first our on the normal K2 base camp trek until a place known as the king Polo field. This is where the K2 trekkers cross a bridge, to the right, but we head straight up the valley to reach the start of the Biafo Glacier valley and Camp the night in Namla. Camp (B/L/D)

#### **Day 7: Trek to Baintha 7-8 Hours 3940m**

Today we drop down on to the Glacier and head up the ice highway to to Baintha Camp. We will be crossing from side to side the glacier finding the best route through the pressure ridges and crevasses. There is a basic trail on rubble covered ice. Camp (B/L/D)

#### **Day 8: Rest / Acclimation Day at Baintha 3940m**

Rest day / Acclimation day with an optional trek to Baintha Barak base camp Camp (B/L/D)

#### **Day 9: Trek to Marfogoro 6 Hours 4300m**

The trek up to Marfogoro camp starts of tricky on rubble covered ice before clearing and we get to the ice highway. Granulated ice, which grips well with out crampons and we make good progress. Again the route zigzags to cross crevasses. We are entering the big mountains with views the Ogre and the Latoks ranges. Camp (B/L/D)

#### **Day 10: Trek to Snow Lake 7 Hours 4600m**

One of Pakistan and the world natural wonders is Snow Lake. Snow Lake is a high altitude glacial basin over 16km wide at the head of the Biafo and Hispar glaciers. We camp on the lake surrounded by the magnificent mountains rarely seen. Camp (B/L/D)

**Please note the rest of this trip is very much exploratory and therefore accurate information and details are not know. So sorry for the lack of detail. This is our planned route and camps but can change depending on the conditions and weather we encounter.**

**Day 11: Trek to High Camp Lupke La around 7 Hours 4900m**

From this day we really head off the map. Here some trekkers head west to cross the Hispar la. We will head north following the Simgang Glacier heading toward the Lukpe La Pass. We will setup camp below the Lukpe La pass at a High camp. (B/L/D)

**Day 12: Cross Lukpe La to Base Camp 7-8 Hours**

An early start when the snow is strong and crisp. We will trek over Lupke La at 5700m. We will have a short rest to admire the views of simyang Skamla Simla Glaciers, and descend to base camp for a much needed rest. (B/L/D)

**Day 13: Trek to Junjol / Karavan base camp 7-8 Hours p**

Today our trek descending toward Baraldu Glacier. Walking around 7-8 hrs. to reach the Baraldu base camp. (B/L/D)

**Day 14: Trek to Skorag**

Trek to Skorag. Camp

**Day 15: Trek to Chikar**

Trek to Chikar

**Day 16: Trek to Shuarth**

Trek to Shuarth B/L/D

**Day 17: Trek to Shimshall Pass**

Trek to Shimshall pass, camp B/L/D

**Day 18/19/20/21: Climb Munglik Sar Peak 6050m**

Rest day and Climb trekking peak Munglik har 6050m B/L/D

**Day 22: Trek to Purian Sar**

Trek to Purian Sar. B/L/D

**Day 23: Trek to Garasar**

Trek to Garasar B/L/D

**Day 24: Trek to Shimshal Village**

Trek to Shimshall. Guest house B/L/D

**Day 25: Drive to Passu Village**

Drive to Passu, visit passu village. Proceed to Borit lake B/L/D

**Day 26: Drive to Hunza**

Drive to Hunza. Excursion to Altit and Baltit Forts. Hotel B/L/D

**Day 27: Drive Gilgit Fly Islamabad**

Proceed to Gilgit fly to Islamabad, in case of cancellation, drive to Naran over Babu Sar pass B/L/D

**Day 28: Sightseeing in Islamabad or Drive to Islamabad**

Drive to Islamabad 6-7h evening preparation for international departure B/L/D

**Codes: Hotel / H    Breakfast/ B    Lunch/L    Dinner / D    Camp/▲**

**Price includes**

- Air tickets from Islamabad/Skardu/ Gilgit /Peshawar to Chitral to Islamabad
- Transportation (air conditioned / non AC) from Islamabad to Chitral, Skardu, Shimshall, Hunza, Chitral, respectively to the itinerary including all the hotel transfers.
- Hotel accommodation (twin sharing rooms) with full meals, mineral water with hotel meals. All meals during the trek.
- Wages of the porters and their insurance and first aid kit
- Sleeping tents (two men) mess and kitchen tents, sleeping mattresses, tables, chairs, toilet tent. Kitchen appliances, including stove, fuel and crockery etc.
- Services of mountain guide, cook, assistants and their insurance.
- Toll tax, parking fee, camping fee etc.
- Every member will be accommodated with baggage 25kg

**Price excludes**

- International flight, Excess weight.
- Personal gear, clothing / equipment's, room service, Laundry, beverages and phone calls.
- In case of road blockage, due to Natural hazards, if necessary to change vehicles from one point of road to next point, the extras would be charged.
- Insurance and helicopter rescue coverage etc.

**Trip Price:**

Price per person

- (based on 2 – 4 pax) 4999 USD
- (based on 4 – 6 pax) 4499 USD
- (based on 7+ pax) 3999 USD

Single Room supplement \$. 200  
Single Tent Included

To secure a place a non-refundable deposit of 750 USD  
balance 7 weeks before trips starts.

Min 4 bookings, max 10 bookings

## **Dates (28 Day Trek)**

Arrival to Islamabad : Day 1  
Depart to Islamabad : Day 28

Sunday 7<sup>th</sup> July 2019  
Saturday 3<sup>rd</sup> August 2019

## **Insurance**

To join one of our trips you **MUST** have comprehensive travel and medical insurance. Please Note we don't arrange or sell insurance.

## **Other Points**

A comprehensive gear list will be sent at time of booking

## **Additional Information:**

### **Videos**

[https://www.youtube.com/watch?v=e76N7fW\\_bXU](https://www.youtube.com/watch?v=e76N7fW_bXU)  
[https://www.youtube.com/watch?v=anY7Y\\_HKpiQ](https://www.youtube.com/watch?v=anY7Y_HKpiQ)  
<https://www.youtube.com/watch?v=gwg0rdFxRfA>  
[https://www.youtube.com/watch?v=H\\_XRhUBn548](https://www.youtube.com/watch?v=H_XRhUBn548)

### **My K2 Trek Videos**

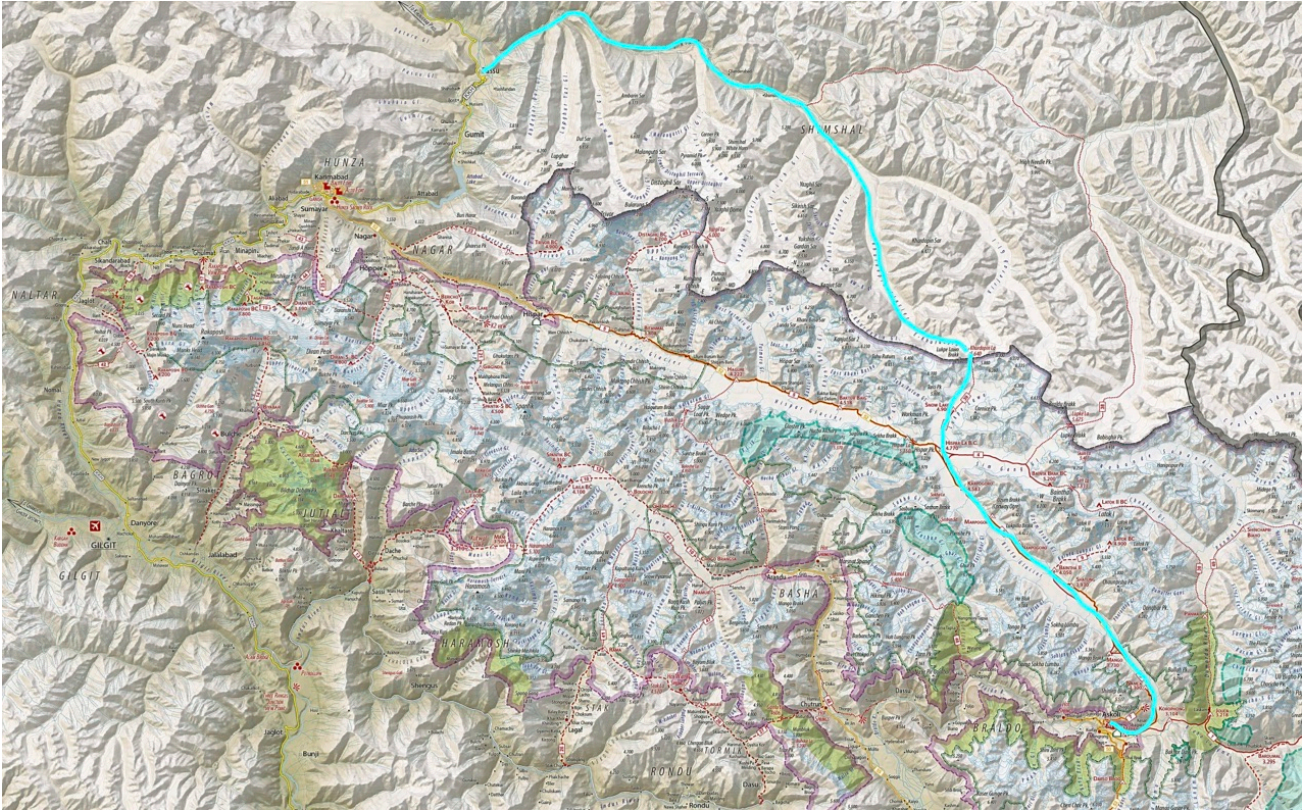
<https://www.youtube.com/watch?v=rZRJm3oWPOo&t=14s>  
<https://www.youtube.com/watch?v=Jh60qNrWjvE&t=7s>

### **Photo Essay of driving the KKH**

<https://adetnw.exposure.co/karakorum-highway>

### **Photo Galleries**

[http://www.ade-summers-photography.com/remebering\\_k2/](http://www.ade-summers-photography.com/remebering_k2/)



## Our Planned Route.



View of Minglir Sar from the summit of Koz Sar , Photo by Karim Hayat









